



**HUNTER RIVER AGRICULTURAL &  
HORTICULTURAL ASSOCIATION'S  
160th MAITLAND SHOW**

**"CELEBRATING A RESILIENT COMMUNITY"**

**19th-21st February 2021**

**Boer Goat Schedule**

**Sunday 21st February 2021**

**Judge: Paul Ormsby**

**HUNTER RIVER AGRICULTURAL  
& HORTICULTURAL ASSOCIATION**  
LIMITED



Dear Exhibitor,

Welcome once again to the Maitland Show and the Goat Section for Boer Goats. Our thanks go to the exhibitors, volunteer stewards and sponsors.

Regards,

Christine Andrews

## HICKS HAY & GRAIN PTY. LTD.

Stock feed Specialists

*Family owned and operated for 30 years*

Good range of stock feeds, poultry feeds, bird seeds etc.

364 Clarence Town Road WOODVILLE 2321

**Phone: 02 4930 1485**

Fax: 02 4930 1069 email: [hickshay@bigpond.com](mailto:hickshay@bigpond.com)



*\*Proud Sponsors of the Junior Boer Buck and Junior Boer Doe Champions\**

**FARMLAND**  **CO**  
EST. 2002

**HELPING YOU GROW**

# Conditions of Entry

1. Animals registered with the Boer Goat Breeders Association of Australia (BGBAA) and Boer Goat Australia Inc (BGA) are eligible to enter and will be judged under the Breed Standard of the Boer Goat Breeders Association of Australia (BGBAA). Exhibitors are to abide by the regulations and by-laws of the Hunter River Agricultural and Horticultural Association Limited and must be the bonafide owner of the exhibit.
2. No animals will be admitted to the show unless duly entered and the entry fee paid by the closing date
3. Entries will be declared invalid unless accompanied by the "Goat Show and Sale Health Declaration", signed by the exhibitor or their authorised representative.
4. Age will be at the date of the Show.
5. Dust coats or clothing carrying insignias or markings which may identify the exhibitor must not be worn by attendants parading exhibits before a judge.
6. No stud signs permitted to be displayed prior to the start of judging.
7. Exhibitors are requested to refrain from conversing with the judge & other exhibitors during judging, unless asked to do so by judge or steward.
8. All stock must remain on the ground until 3.00 pm on the day of judging unless released by the Chief Steward. Failure to do so could result in prize money being withheld.
9. All stock must be free from parasites and in clean show condition, and must be the bona fide property of the exhibitor, except in specified group classes.
10. Goats entered in any group or progeny class or special class MUST be entered in the respective age class.
11. Classes may be combined or divided at the Chief Steward's discretion
12. Points will be allocated on the following basis for any section referring to "Most Successful" . First 3, Second 2, Third 1
13. Classes with less than 4 entries will have prize money awarded to 1st place only, though all place ribbons will be awarded
14. The Chief Stewards decision will be final.
15. All vehicles must be removed from the judging area and surrounding area

# Boer Goat Schedule

**Sunday 21st February 2021**

**Contact:** Ayala Davies on 0417 471 940

**Judge:** Paul Ormsby

**Judging to commence:** 10am

**Entry Fees:** \$3.00 per animal per class or group class

**Entries close:** Tuesday 16th February 2021

**Entries to:** Maitland Showground Office  
50 Blomfield St Maitland 2320

**Late Entries:** Late entries will attract an additional \$20 lodging fee

**Prizes:** 1st: \$6 2nd: \$3 3rd: \$1

**Please note Condition 13 on page 3**

## Classes:

### Junior Standard Boer Does

- B1 Under 6 months
- B2 6 months and under 12 months

### Junior Red Boer Does

- B3 under 12 months
- B4 6 months and under 12 months

### Junior Paint Boer Does

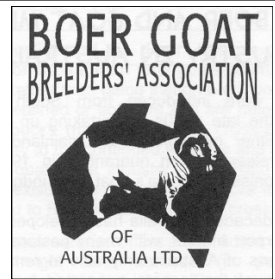
- B5 Under 6 months
- B6 6 months and under 12 months

### Junior Champion Standard Boer Doe

Sponsored by Hicks Hay & Grain

### Junior Reserve Champion Standard Boer Doe

- B7 12 months and under 18 months
- B8 18 months and under 24 months



## **Senior Standard Boer Doe**

- B9            12 months & under 24 months  
B10           24 months & over



## **Senior Red Boer Doe**

- B11            12 months & under 24 months  
B12           24 months & over

## **Senior Champion Standard Boer Doe**

Sponsored by Farmland Co. Rutherford

## **Senior Reserve Champion Standard Boer Doe**

## **Grand Champion Standard Boer Doe**

Sponsored by Davel Boer Goat Stud \$25.00

## **Junior Standard Boer Bucks**

- B13            Under 6 months  
B14            6 months and under 12 months

## **Junior Champion Standard Boer Buck**

Sponsored by Hicks Hay & Grain

## **Junior Reserve Champion Standard Boer Buck**

## **Red Boer Buck**

- B15            Buck any age

## **Champion Red Exhibit**

## **Senior Standard Boer Buck**

B16      12 months and under 24 months

B17      24 months and over

## **Senior Champion Standard Boer Buck**

Sponsored by Farmland Co. Rutherford

## **Senior Reserve Champion Standard Boer Buck**

## **Grand Champion Standard Boer Buck**

Sponsored by Catherine Cunningham

## **Supreme Exhibit**

Sponsored by Christine & Ron Andrews \$25.00

## **Group Classes**

B18      Doe with progeny at foot (to be selected from general classes)

B19      Sire's Progeny group of 3 animals, any age by the same sire

Not necessarily bred or owned by the exhibitor but by at least 2 dams and to be selected from general classes

B20      Exhibitors group of 3 animals to be selected from general classes. Exhibits to be bred and owned by the exhibitor



## **BOER GOAT AUSTRALIA INC.**

[www.boergoataus.com.au](http://www.boergoataus.com.au)

We have a registry for all the Boer breeds, Stud and Commercial Upgrades.

**Registry:** The Livestock and Business Centre (Kiama, N.S.W.)

[www.lbcentre.com.au](http://www.lbcentre.com.au)

### **Registry and Office:**

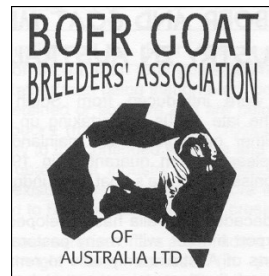
**ABRI, University of New England  
Armidale, NSW 2351**

**Ph: 02 6773 5177**

**E: [info@australianboergoat.com.au](mailto:info@australianboergoat.com.au)**

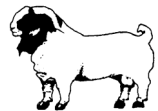
**[www.australianboergoat.com.au](http://www.australianboergoat.com.au)**

**Hunter Valley 0417 471 940**



## **BOER GOAT SPONSORSHIP 2020**

- Davel Boer Goat Stud, Ayala Davies
- Farmland Co. Rutherford
- Hicks Hay & Grain
- Boer Goat Breeders Association of Australia Ltd. (NSW Branch)
- TNN Mineral Plus
- Christine Andrews
- Boer Goat Australia Inc
- Catherine Cunningham



## Access to Goat Section:

The Louth Park Road Entrance must be used when delivering animals.

Parking will not be permitted in front of the judging area.

Exhibitor's vehicles must be removed from this area prior to the commencement of judging of ANY of the goat breeds.

**Special Parking Area:** \$5.00 per vehicle on Cultivation Road beyond stables on other side of

**Deliver animal exhibits this way**

