



# 163rd MAITLAND SHOW 2025

Love Our Show

14 - 15 - 16 February 2025



## BOER GOATS SCHEDULE



### “Love Our Show”

#### **Zero Tolerance to Abuse**

Aggressive behaviour and any form of verbal or physical abuse towards any person including staff, members, volunteers, competitors or guests will not be tolerated on the Maitland Showground at any time

Anyone engaging in inappropriate behaviour at the Maitland Showground will be asked to change their behaviour, issued a formal warning, removed from the grounds or barred from entering the grounds in the future.



HUNTER RIVER AGRICULTURAL & HORTICULTURAL ASSOCIATION LIMITED

We acknowledge the Wonnarua People as the Traditional Owners and Custodians of the land where the Maitland Show is held, and pay our respect to all Elders, past, present and emerging.



# 163rd MAITLAND SHOW 2025

Love Our Show

14 - 15 - 16 February 2025



## BOER GOAT SCHEDULE

### General Information:

### Entry Forms:

- Online entries via Maitland Showground webpage.  
<https://maitlandshowground.com.au/msevents/maitland-show/competitions/>

**Online entries close on Wednesday 5<sup>th</sup> February 2025.**

Please complete your entry and payment online.

- Or deliver your entry form by close Wednesday 5<sup>th</sup> February , 2025 - 2pm

To Maitland Showground Office  
50 Blomfield Street, Maitland 2320. (Office hours 9am to 2pm)

Phone: 02 49335052

Payment: Cash or Eftpos only.

### Entry Fees

\$3.00 per class

Late entries will be accepted on the day of judging up to 9am. However, a late entry fee of \$20 lodging fee per animal.

No refunds are available for withdrawals for classes or non-attendance.

Substitutes are permitted within classes already entered. No new entries will be accepted on the day after 9am.

**Chief Steward** Ayala Davies Enquiries: 0417 471 940

**Showground PIC:** NE369034

**Judge:** Marlene Andrews

**Before The Judging Commences:** The Judge will give assistance and training in ring craft and handling your exhibit

**Judging to Commence:** 10am on Saturday 15th FEBRUARY 2025.

**Before The Judging Commences:** The Judge will give assistance and training in ring craft and handling your exhibit

**Prizes**  
1st Prize: \$6.00  
2nd Prize: \$3.00  
3rd Prize: \$1.00  
(Please note condition 13)

All Prize Money will be paid by Direct Deposit after the show. Winners will be contacted by email with a secure payment link to enter banking details for prize payment.



HUNTER RIVER AGRICULTURAL & HORTICULTURAL ASSOCIATION LIMITED

We acknowledge the Wonnarua People as the Traditional Owners and Custodians of the land where the Maitland Show is held, and pay our respect to all Elders, past, present and emerging.



# 163rd MAITLAND SHOW 2025

Love Our Show

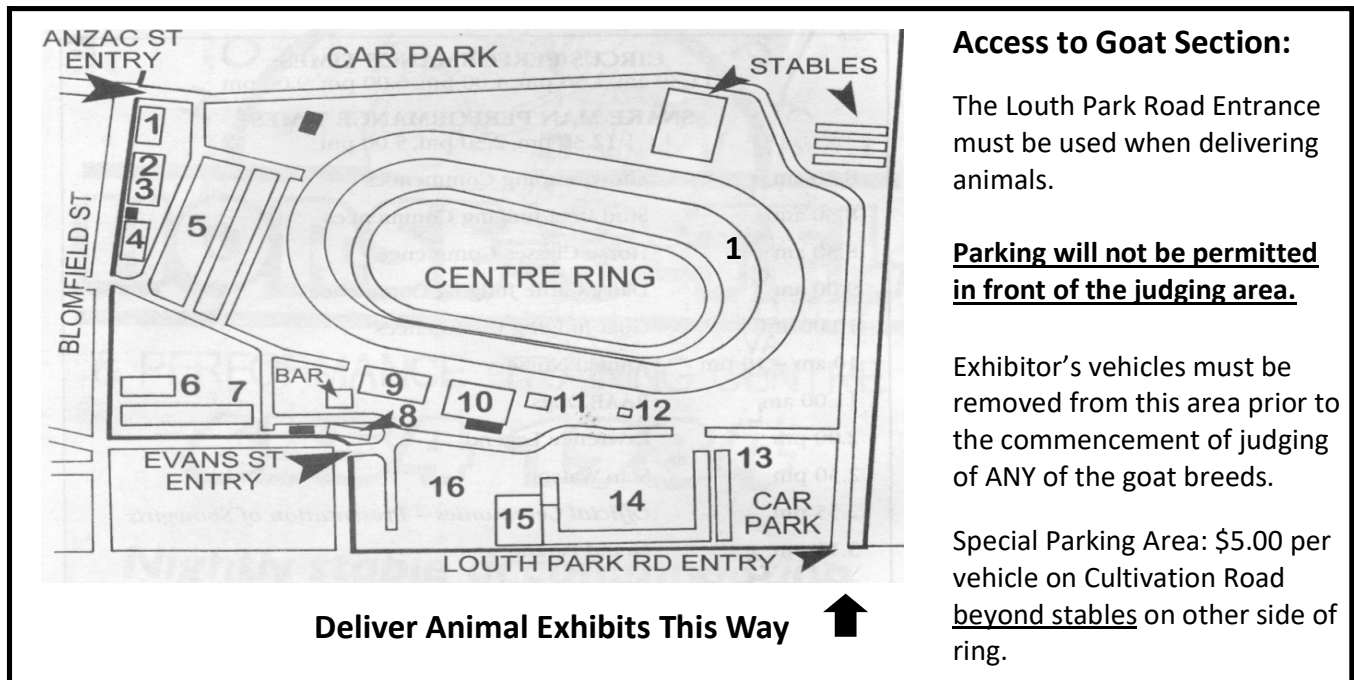
14 - 15 - 16 February 2025



## Entry to the Showground:

- Entry to Showground - please use THE GATE ON LOUTH PARK ROAD, MAITLAND
- Exhibitors and handlers are not required to pay an entry fee. Any other person accompanying the Exhibitor (other than a handler) wishing to enter the showground during the running of the show will pay normal gate prices unless they are a member of the Association.
- Vehicular access is permitted in the lead-up and following the Show, for the delivery and collection of your exhibit. Vehicular access to the livestock area is permitted for animal exhibitors only during the Show.

## BOER GOATS ARE LOCATED AT 16



## Access to Goat Section:

The Louth Park Road Entrance must be used when delivering animals.

**Parking will not be permitted in front of the judging area.**

Exhibitor's vehicles must be removed from this area prior to the commencement of judging of ANY of the goat breeds.

Special Parking Area: \$5.00 per vehicle on Cultivation Road beyond stables on other side of ring.

**We thank our sponsors for support of the Boer Goat section at Maitland Show**

Davel Boer Goat Stud, Ayala Davies

Farmland Co. Rutherford

Hicks Hay & Grain

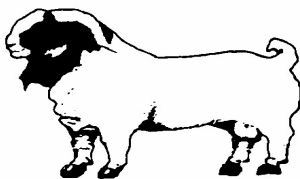
Boer Goat Breeders Association of Australia Ltd. (NSW Branch)

Catherine and Mark Hollis

Boer Goat Australia Inc

Christine and Ron Andrews

Greg Selby Boers at the Bay



HUNTER RIVER AGRICULTURAL & HORTICULTURAL ASSOCIATION LIMITED

We acknowledge the Wonnarua People as the Traditional Owners and Custodians of the land where the Maitland Show is held, and pay our respect to all Elders, past, present and emerging.



# 163rd MAITLAND SHOW 2025

Love Our Show

14 - 15 - 16 February 2025



## RULES AND REGULATIONS:

### Conditions Of Entry

1. Animals registered with the Boer Goat Breeders Association of Australia (BGBAA) and Boer Goat Australia Inc (BGA) are eligible to enter and will be judged under the Breed Standard of the Boer Goat Breeders Association of Australia (BGBAA). Exhibitors are to abide by the regulations and by-laws of the Hunter River Agricultural and Horticultural Association Limited and must be the bonafide owner of the exhibit.
2. No animals will be admitted to the show unless duly entered and the entry fee paid by the closing date
3. Entries will be declared invalid unless accompanied by the "Goat Show and Sale Health Declaration", signed by the exhibitor or their authorised representative.
4. Age will be at the date of the Show.
5. In accordance with the NLIS requirements all goats entering the showground must have an approved *NLIS ear tags (RFID/eID or visual) or Leg Band including earless and miniature goats of any age. The ear tag or leg-band must not be removed.*
6. Dust coats or clothing carrying insignias or markings which may identify the exhibitor must not be worn by attendants parading exhibits before a judge.
7. No stud signs permitted to be displayed prior to the start of judging.
8. Exhibitors are requested to refrain from conversing with the judge & other exhibitors during judging, unless asked to do so by judge or steward.
9. All stock must remain on the ground until 3.00pm on the day of judging unless released by the Chief Steward. Failure to do so could result in prize money being withheld.
10. All stock must be free from parasites and in clean show condition, and must be the bona fide property of the exhibitor, except in specified group classes.
11. Goats entered in any group or progeny class, or special class **MUST** be entered in the respective age class.
12. Classes may be combined or divided at the Chief Steward's discretion
13. Points will be allocated on the following basis for any section referring to "Most Successful". First 3, Second 2, Third 1
14. Classes with less than 4 entries will have prize money awarded to 1st place only, though all place ribbons will be awarded
15. The Chief Stewards decision will be final.
16. All vehicles must be removed from the judging area and surrounding area prior to the commencement of judging. Vehicles must be parked in the exhibitor's car park until the conclusion of judging of all goat sections



HUNTER RIVER AGRICULTURAL & HORTICULTURAL ASSOCIATION LIMITED

We acknowledge the Wonnarua People as the Traditional Owners and Custodians of the land where the Maitland Show is held, and pay our respect to all Elders, past, present and emerging.



# 163rd MAITLAND SHOW 2025

Love Our Show

14 - 15 - 16 February 2025



## BOER GOATS SCHEDULE

### CLASSES

#### Junior Standard Boer Does

- 401 Under 6 months
- 402 6 months and under 12 months

#### **JUNIOR CHAMPION STANDARD BOER DOE & RIBBON**

Sponsored by *Hicks Hay and Grain Woodville*

#### **JUNIOR RESERVE CHAMPION BOER DOE & RIBBON**

#### Junior Red Boer Does

- 403 under 12 months

#### **JUNIOR CHAMPION RED BOER DOE & RIBBON**

Sponsored by *Greg Selby Boers at the Bay*

#### Senior Standard Boer Doe

- 404 12 months and under 18 months
- 405 18 months and under 24 months
- 406 24 months and under 36 months
- 407 36 months and under 48 months
- 408 48 months and over

#### **SENIOR CHAMPION STANDARD BOER DOE & RIBBON**

Sponsored by *Farmland Co Rutherford*

#### **SENIOR RESERVE CHAMPION BOER DOE & RIBBON**

#### Senior Red Boer Doe

- 409 Red Boer Doe over 12 months

#### **SENIOR CHAMPION RED BOER DOE & RIBBON - \$25**

Sponsored by *Christine and Ron Andrew*

#### **GRAND CHAMPION STANDARD BOER DOE & RIBBON**

Sponsored by *Greg Selby Boers at the Bay*

#### Junior Standard Boer Bucks

- 410 Under 6 months
- 411 6 months and under 12 months

#### **JUNIOR CHAMPION STANDARD BOER BUCK & RIBBON**

Sponsored by *Hicks Hay & Grain Woodville*

#### **JUNIOR RESERVE CHAMPION STANDARD BOER BUCK & RIBBON**



HUNTER RIVER AGRICULTURAL & HORTICULTURAL ASSOCIATION LIMITED

We acknowledge the Wonnarua People as the Traditional Owners and Custodians of the land where the Maitland Show is held, and pay our respect to all Elders, past, present and emerging.



# 163rd MAITLAND SHOW 2025

Love Our Show

14 - 15 - 16 February 2025



## Red Boer Bucks Any Age

412 Buck any age

### CHAMPION RED BOER BUCK & RIBBON

Sponsored by *Ayala Davies Davel Boers Goat Stud*

## Senior Standard Boer Buck

413 12 months and under 24 months

414 24 months and over

### SENIOR CHAMPION STANDARD BOER BUCK & RIBBON

Sponsored by *Farmland Co Rutherford*

### SENIOR RESERVE CHAMPION STANDARD BOER BUCK & RIBBON

### GRAND CHAMPION STANDARD BOER BUCK

Sponsored by *Greg Selby Boers at the Bay*

### SUPREME EXHIBIT STANDARD BOER & RIBBON - \$50

Sponsored by *Christine & Ron Andrews*

### BEST RED BOER IN SHOW & RIBBON

Sponsored by *Farmland Co Rutherford*

## GROUP CLASSES

415 Doe with progeny at foot (to be selected from general classes)

416 Sire's Progeny group of 3 animals, any age by the same sire.

Not necessarily bred or owned by the exhibitor but by at least 2 dams and to be selected from general classes.

417 Exhibitors group of 3 animals to be selected from general classes.

Exhibits to be bred and owned by the exhibitor

## COMMERCIAL MEAT GOAT SECTION

418 Unregistered Boer or Cross bred Doe under 12 months

419 Unregistered Boer or Cross bred Doe over 12 months

### CHAMPION COMMERCIAL DOE

Sponsored by *Davel Boer Goat Stud*

420 Unregistered Boer or Cross bred doe and progeny

421 Unregistered Boer or Wether - any age

Sponsored by *Davel Boer Goat Stud*



HUNTER RIVER AGRICULTURAL & HORTICULTURAL ASSOCIATION LIMITED

We acknowledge the Wonnarua People as the Traditional Owners and Custodians of the land where the Maitland Show is held, and pay our respect to all Elders, past, present and emerging.